

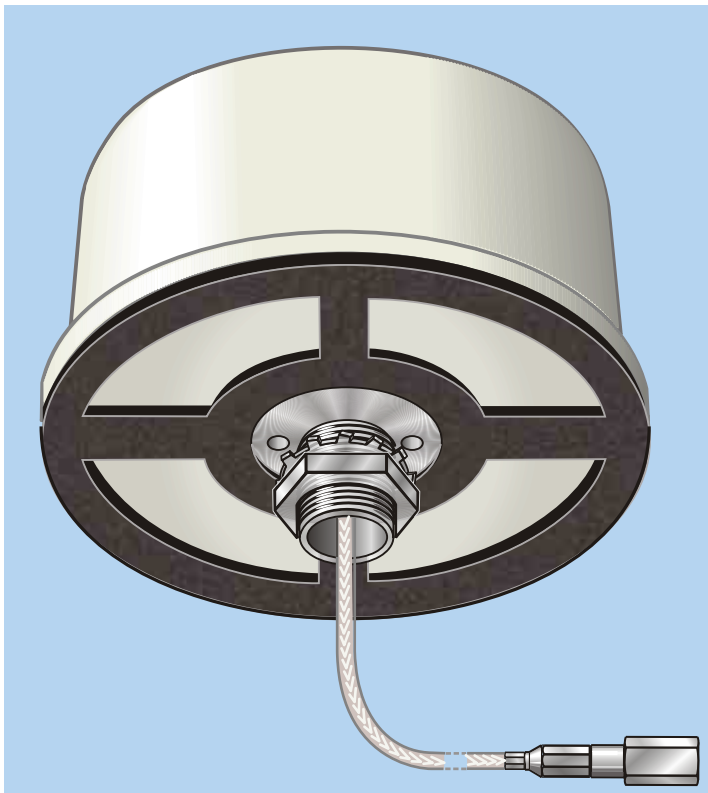
Datenblatt (Data sheet)

RA-F 400

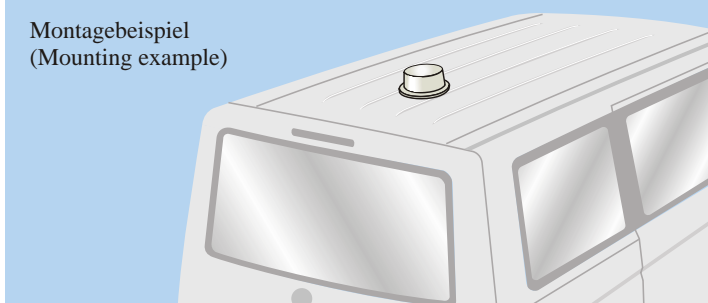
Radom-Antenne für TETRA (Radom antenna for TETRA)

Bestellnummer (Order No.): 5315000

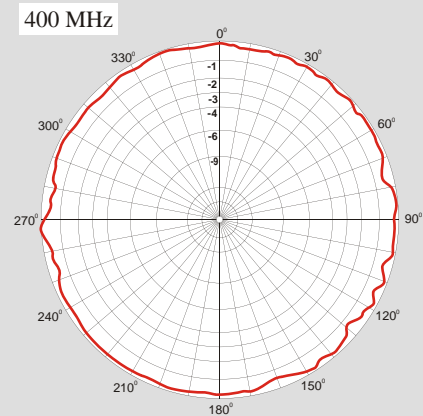
Stand (Updated): 09/2013



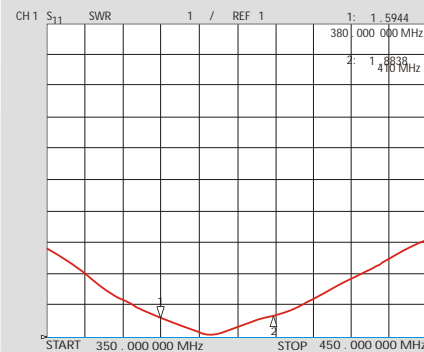
Montagebeispiel
(Mounting example)



Horizontaldiagramm (Horizontal pattern)



VSWR



Frequenzbereich (Frequency range):	380 MHz-410 MHz
Impedanz (Impedance):	50
Polarisation (Polarisation):	vertikal (vertical)
Gewinn (Gain):	2,0 dBi
VSWR:	1,8
Maximale Belastbarkeit (Max. power):	10 W
Gewicht ca. (Weight approx.):	250 g
Durchmesser/Höhe (Diameter/Height):	155 mm/72 mm
Kabel/Anschluss (Cable/Connector):	200 mm, FME (m)
Montage (Mounting):	Dachmontage auf metallischen Flächen, (optional auch auf nichtmetallischen Flächen*) [Roof mounting at metallic surfaces, at non-metallic surfaces optionally*] Montageloch Ø 14,5 mm (Mounting hole: Ø 14,5 mm)
Material:	Kupfer, Schutzhaube aus UV-beständigem Kunststoff (Copper, protective housing of UV resistant plastic)

*) bei Bestellung angeben (When ordering please specify)

Änderungen vorbehalten (Subject to change without notice)